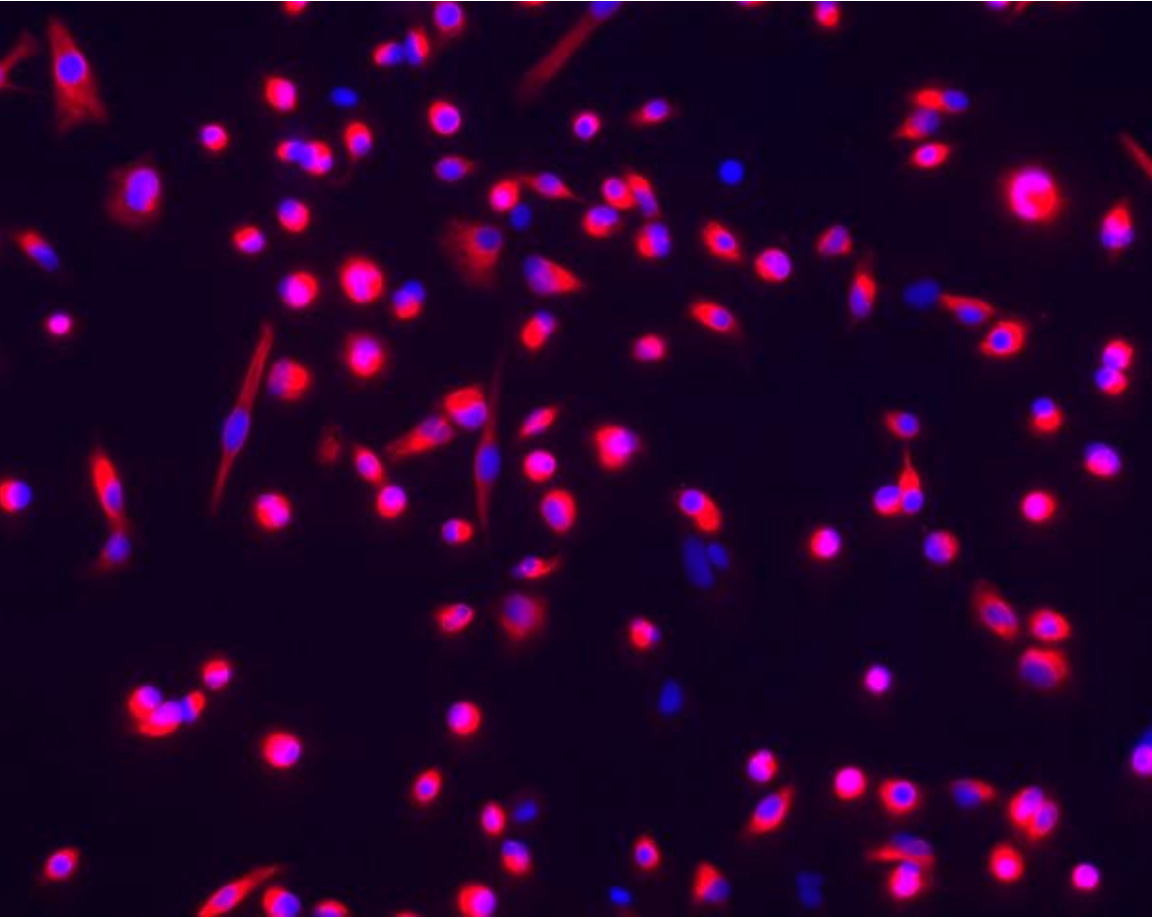


COOK®

MYOSITE



Advance your research  
with higher quality  
human muscle cells.

COOK®

MYOSITE

# Cook MyoSite Skeletal Muscle Cells (SkMDC)

Now, a higher standard in human cellular research.



## Meeting the Challenge

Human primary cells are an essential tool for researchers in both academic and industrial settings, creating a bridge between the discovery phase and the effective therapeutic translation of basic research.

Unfortunately, ask any experienced scientist and they'll tell you that performing research with human primary cells is tough. Isolation processes are difficult and often yield cultures of low cell number and varying purity. Combine this with difficulty of culture expansion and loss of phenotype, and the use of less relevant cell lines have become an attractive alternative. Until now.

## What Cook MyoSite SkMDC Offers

### Reliable Expansion

When paired with Cook MyoSite Myotonic™—a culture medium specifically formulated for skeletal muscle cells—Cook MyoSite SkMDC cultures expand to experimentally relevant quantities while maintaining culture phenotype.

### High Quality

Each lot is free from adventitious agents and is quality tested to ensure product consistency and performance.

### Broad Selection

Cook MyoSite SkMDC are available from both male and female donors, and from a wide range of donor ages.



## Consistent Isolation

Each lot is obtained during a controlled process, with quality processing materials, which allow the consistent isolation of specific progenitor cell populations. This allows the minimization of the cells themselves as experimental variables.

## Superior Characterization

Cook MyoSite SkMDC are the most characterized human primary cells available. The Cook MyoSite Gene Array Analysis, an industry first, is a RT-PCR-based analysis. This provides researchers with baseline mRNA expression data for each lot of Cook MyoSite SkMDC to clearly define your primary starting culture.

## A New Legacy

Cook MyoSite Incorporated is a biotech company located in Pittsburgh, PA that provides premium skeletal muscle cells to researchers in both academic and industrial settings. Cells are isolated, grown and packaged in a clean-room facility. All cell products are subjected to rigorous testing prior to packaging to ensure the cells you receive are of the highest purity and quality.

Cook MyoSite is part of Cook Medical ([www.cookmedical.com](http://www.cookmedical.com)), the first company to introduce minimally invasive interventional devices in the United States. Today, Cook Medical participates in all global markets, integrating device design, pharma, gene and cell therapy, and biotech to enhance patient safety and improve clinical outcomes. In 2002, Cook Medical formed MyoSite to guide the company into the expanding world of cellular technologies.

To learn more about our products and place an order, visit [www.cookmysite.com](http://www.cookmysite.com)  
or email [researchsales@cookmysite.com](mailto:researchsales@cookmysite.com).

These cells are distributed for research use only. Cells are not approved for human or veterinary use.  
Do not use these cells with in vitro diagnostic assays.